


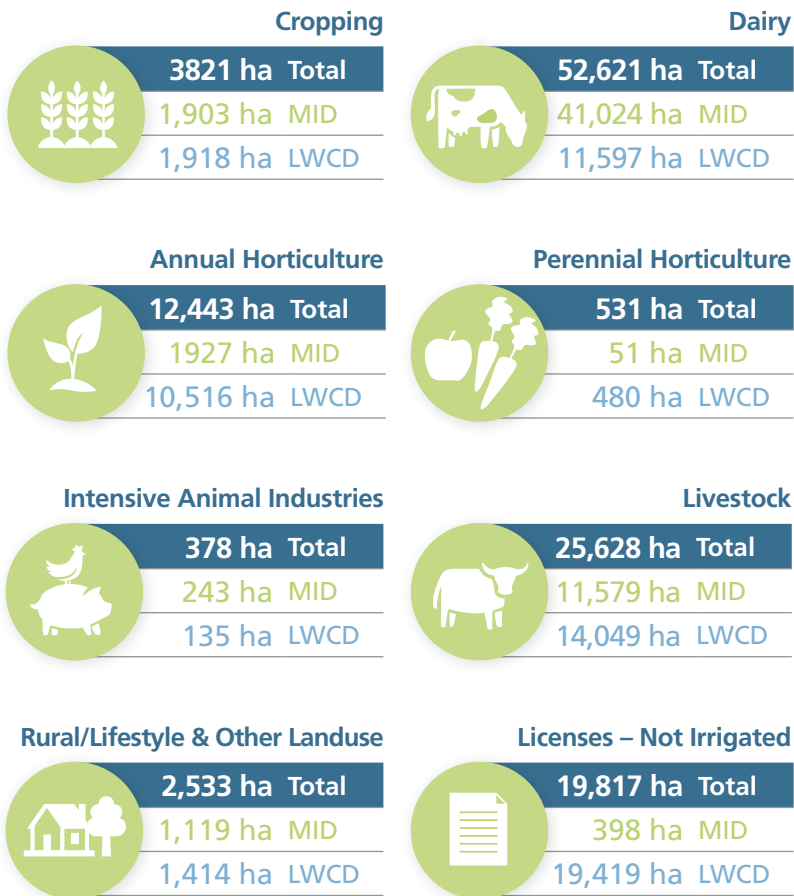


Regional Irrigated Land and Water Use

Mapping in the Lake Wellington Catchment 2019/20

117,772 ha Total Area Mapped	1981 Total Number of Irrigation Licences	198,984 ML Total Water Use 
58,244 ha Macalister Irrigation District Licences	958 Macalister Irrigation District Licences	118,603 ML Macalister Irrigation District Licences
59,528 ha Lake Wellington Catchment Diversion Licences	1,023 Lake Wellington Catchment Diversion Licences	80,381 ML Lake Wellington Catchment Diversion Licences








Landuse by Industry 2019/20



Caveats:

- 1 Data is reflective of activity at the point of survey completed in May 2019 and based on the 18/19 irrigation season.
- 2 Dairy includes all of the dairy land use categories including 'Dairy' (WUL with an active milking shed), 'Dairy Associated' (land linked to an active dairy shed WUL) and 'Dairy Agistment and Fodder' (no clear link to an active milking shed but dairy cattle present or a former active dairy farm that may be in transition).

Water by Industry 2019/20

Cropping  Total 7,689 ML MID 2,198 ML LWCD 5,491 ML
Dairy  Total 119,729 ML MID 94,822 ML LWCD 24,907 ML
Annual Horticulture  Total 16,841 ML MID 4,870 ML LWCD 11,971 ML
Perennial Horticulture  Total 424 ML MID 20 ML LWCD 404 ML
Intensive Animal Industries  Total 900 ML MID 469 ML LWCD 431 ML
Livestock  Total 34,468 ML MID 14,985 ML LWCD 19,483 ML
Rural/Lifestyle & Other Landuse  Total 2,761 ML MID 1,163 ML LWCD 1,598 ML
Licenses - NOT Irrigated  Total 16,172 ML MID 77 ML LWCD 16,095 ML